



Bartec (Replacement)

Manesty Data Panel With Bartec HMI

Many Manesty coating machines were supplied with a Data Panel control system.

Based on a Siemens S5 or S7 PLC, they use a Bartec BAT VGA as their HMI.

CSI have developed a replacement HMI using a **Siemens Simatic HMI**.



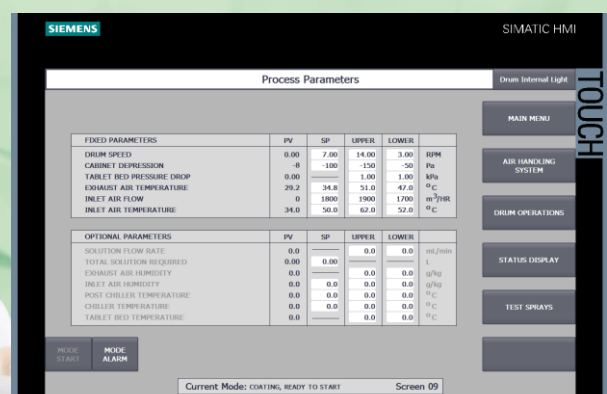
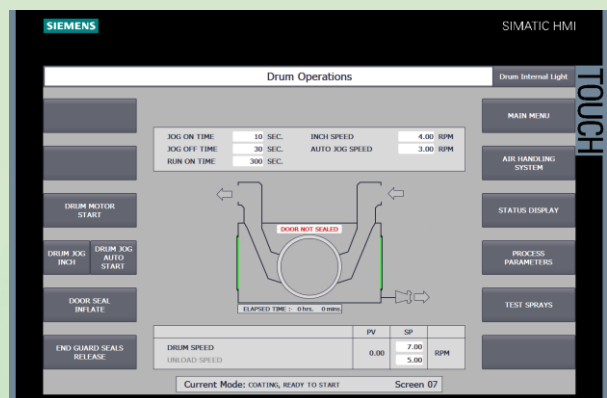
Validation

The original Bartec HMI has no decision making capability and is designed to pass information back and forth to the PLC for all commands to be acted on.

Therefore, changing the HMI has no effect on the functionality of the system, in turn reducing the validation time for replacement.

Screens

All screens are replicated, with the benefit of touch control removing the pushbutton functions required with the Bartec HMI.



Operation

All screens and functions have the same feel and layout.

All engineering screens are replicated for ease of maintenance.

All hidden or Password protected areas remain the same.

Specification

Controller (PLC)	Type	S5 or S7
Electrical Supply	Type	24 VDC
Screen Manufacturer	Type	Siemens
Screen Model	Type	Simatic
Screen Operation	Type	Touch
Communication	Type	Ethernet

Screens