

Available equipment in stock.

Machine	Model	Size	Serial Number
Manesty Accelacota	350	350Kg	15409-82

Coating Systems have a large variety of second hand coating machines available.

All machines supplied by CSI are refurbished and supplied with NEW.

- Control Systems
- Inlet air handling units
- Spray systems
- Exhaust fans and filter units



This machine is a Manesty 350, which is the updated 60" machine, full stainless construction. (*Arm removed for storage*)

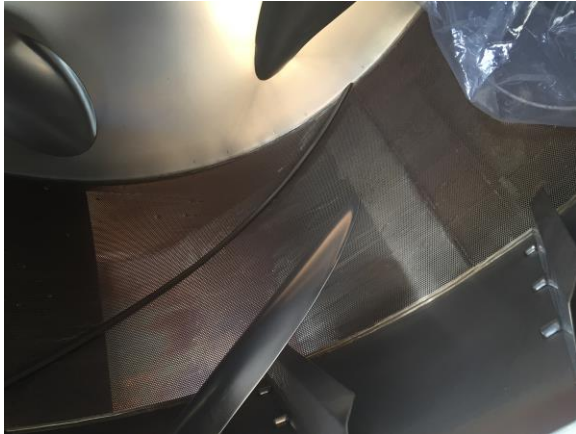
All machines are stocked as received from previous owner to allow the next customer to select options applicable to them however, as a generic machine this machine could be offered with the following equipment at the budget price indicated.

Machine

The machine as a base machine has:

- Rabbit baffles
- Unload Baffles

The machine will be refitted with a spray arm and new spray manifold.



The machine will have the following refurbishment prior to supply.

New Exhaust plenum seals.

New primary, drive replacing the V belt adjustable drive for fixed timing belt and inverter use.

Complete clean and drum polish with ceramic pins.

Spray system

The spray system will all be new.

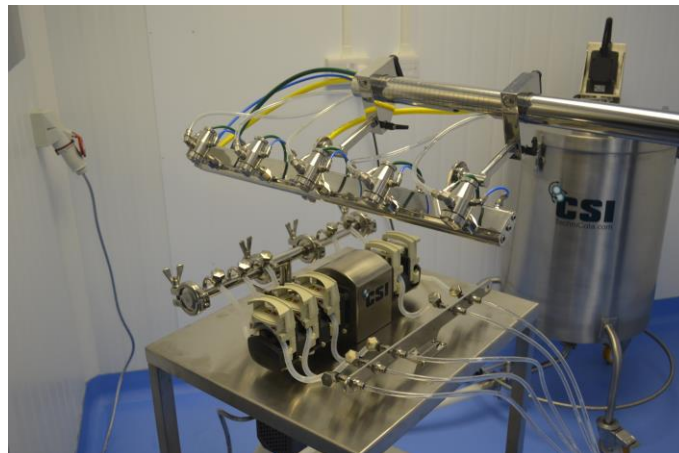
The spray system will comprise of a 5-nozzle manifold and 5 x CSI Mk III nozzles



Example of manifold

As a 5-nozzle system a pump with 5 x 313 pump heads will meet the requirements and be supplied on its own trolley.

Please note the 313 pump head can only be driven in a line of 3 therefore the pump has a centre drive system.



All necessary tubes and pipes are supplied.
(Air connections and Pump tubes)

Excluded is a vessel but this can be added at cost.

Control

A complete manual control system is included giving all basic control for the coating process.



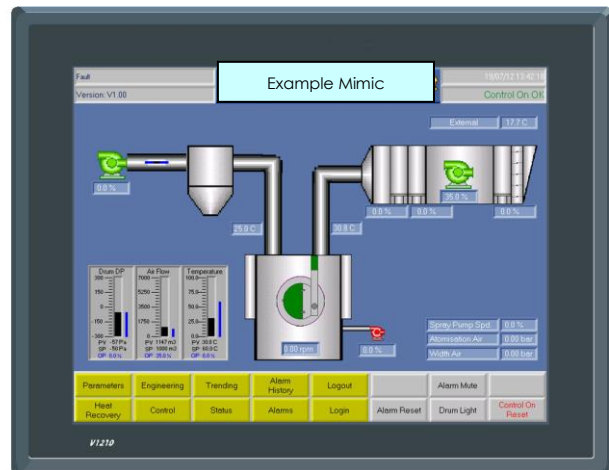
Example of control panel

Panel design is made to fit within customer requirements



Screen examples

Main mimic and control screens



Inlet

A new inlet unit will be supplied, it will be steam heated with the main control valve supplied.



Excluded: Additional steam kit (traps and isolation)

The unit supplied is manufactured to order by Dalair and can be customised at additional cost with a number of options from dehumidification to heat by gas or water.

Exhaust unit

An exhaust fan and filter unit will be supplied. The fan will be a free-standing unit sized for the job.



Example of units

The offer

Within this offer is everything required to coat tablets in a generic aqueous film coating process.

As we do not acquire the additional equipment prior to order things can be modified to meet your requirements.

In addition to this offer the installation will require electrical connections, ductwork and piping. (Steam and Air)
CSI have built up a network of companies able to help with this if required.

For the cost of this system as described please contact

info@coatingsystems.co.uk

The machine can be viewed if required by appointment. Please just contact if required.

Supplied with the equipment is a full document pack including the following:

- Operational manual (s)
- Electrical drawings
- P&ID's
- Material certificates where appropriate
- 3rd party documents
- FAT
- SAT

A full validation pack can be supplied if required

This includes:

- Validation plan
- Quality plan
- DQ documents
- HDS
- FDS
- IQ
- OQ