

Film Coating

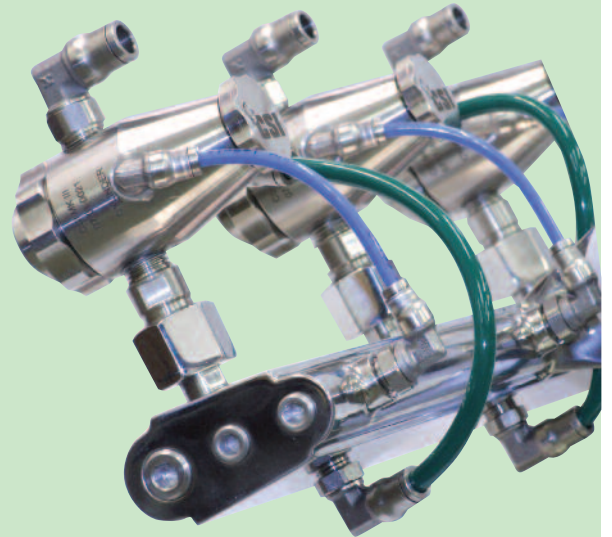


FilmTech System

The **CSI FilmTech™** spray system has been designed and developed as an upgrade or low cost system to control aqueous film coating.

It can be supplied for single or multiple nozzles. This now represents cutting edge technology, striving to provide outstanding and consistent results. Delivering effective and highly controlled film coating on to solid dosage products, the spray nozzle system incorporates many clever design features.

At the front end of the system is the CSI MkIII spray nozzle, suitably mounted for your machine.



Spray Manifolds

A series of spray manifolds have been developed with enhanced aerodynamics. They are shaped specifically to minimize the air turbulence of the co-current airflow within the drum, thus reducing the risk of unwanted spray drying with the associated process inefficiencies.

Total Droplet Control

- **Consistency** – each FilmTech™ system offers accurate control of all parameters, giving repeatability to the process
- **Ease of use** – the simple approach offered by the control makes it extremely operator friendly
- **Adaptability** – the system can operate a variable number of nozzles

Quality

All spray parts are manufactured in 316L stainless steel on world class CNC machinery, and inspected at every stage to ISO9001 standard.

A full material certificate can be supplied on request.

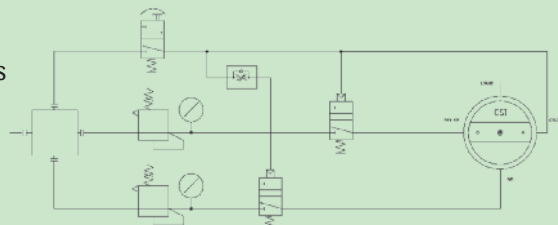
A selection of pump tube is available, all FDA approved.



Cleaning

Maintenance is kept to a minimum:

- The aerodynamics of the spray nozzle reduces the build-up of coating material during production
- Push-in connectors eliminate the need for special tools
- Rapid strip-down and re-assembly saves time between batches
- Clearly marked ports speed up re-connection and reduce operator error
- All parts can be ultrasonically cleaned
- All wetted parts are 316 stainless steel and are therefore easily cleaned
- The overall design avoids entrapment of solids or potentials for organisms
- Specifically designed for solutions with high solids



Spare Parts

A wide range of very competitively priced spare parts, are available for all your coating needs. Including, spare parts for nozzles, using aqueous and organic solvents. A current price list is available from our web site at www.coatingsystems.co.uk

FilmTech Specifications

| | | |
|--|------------|---------------|
| Spray Nozzle | Type | CSI MkIII |
| Number of Spray Nozzles (stated at purchase) | Qty | 1 to 6 |
| Atomization Control | Bar | 1 to 4 |
| Spray Width Control | Bar | 0 to 4 |
| Compressed Air Pressure (supply) | Bar | 5.0 to 5.5 |
| Compressed Air Consumption (per nozzle@3.0 bar) | Litres/min | 120 |
| Pump Type | Type | Peristaltic |
| Pump Manufacturer | | Watson Marlow |
| Pump Model | Type | 313 |
| Tube size wall | mm | 2.4 |
| Tube size bore (standard) | mm | 3.2 (4.8) 6.4 |
| Tube material (Optional dependent on solution) | Type | Silicone |

Parts

